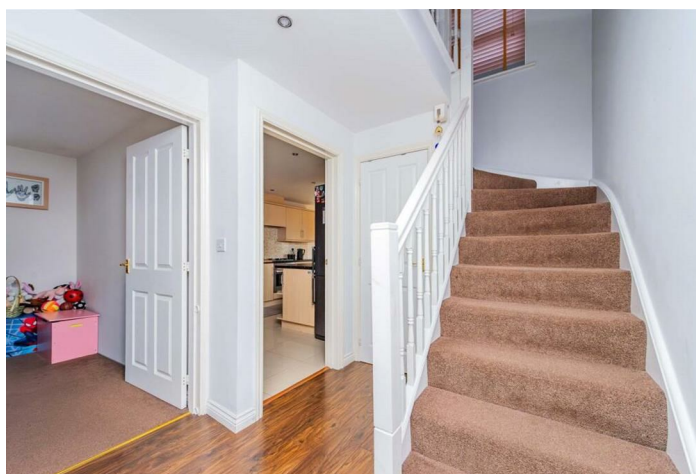




## The Nettlefolds

Hadley, Telford, TF1 5PF

- 3 spacious bedrooms
- 2 cosy reception rooms
  - Built in 2010
- Close to local amenities
  - Ideal family home
- 2 modern bathrooms
- Downstairs cloakroom
  - 1,066 sq ft of space
- Easy access to transport
- Viewing recommended



Local Authority  
Council Tax Band **D**  
EPC Rating **C**



#### Smartsale4u Office

Suite 331 Kemp House, 152-160 City  
Road, London, EC1V 2NX

#### Contact

0204 572 9091  
info@smartsale4u.co.uk  
smartsale4u.co.uk

Agents Note: Whilst every care has been taken to prepare these particulars, they are for guidance purposes only. All measurements are approximate and for general guidance purposes only and whilst every care has been taken to ensure accuracy, they should not be relied upon and potential buyers/tenants are advised to recheck the measurements.